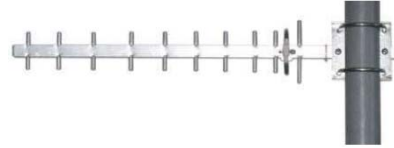


Y A Series Directional Yagi Antenna

This product is specially designed for directional communication in long distance. It is easy to install with its simple structure. The passivated aluminum and high reliability give it long working life-span.



| Part No. | YA2400-11-14N |
|----------------------------------|------------------------|
| Frequency range | 2400~2483MHz |
| Gain | 14dBi |
| VSWR | <1.5:1 |
| Polarization | Horizontal or Vertical |
| Horizontal Beamwidth | 31° |
| Vertical Beamwidth | 29° |
| Front to Back Ratio | ≥16dB |
| Impedance | 50Ω |
| Max Input Power | 100W |
| Lightning Protection | DC Ground |
| Connector | N Female |
| Dimensions | 500mm |
| Cable length | 240mm |
| Weight | 0.35kg |
| Mounting pole (min/max diameter) | Ø40~ Ø50 mm |
| Reflector Material | Aluminum Alloy |
| Rated Wind Velocity | 210km/h |
| Operating temperature | Min -40°C Max +65°C |

* Please specify frequency band when ordering

Eyecom company policy is one of continuing improvement, therefore we reserve the right to change this specification without notice.